

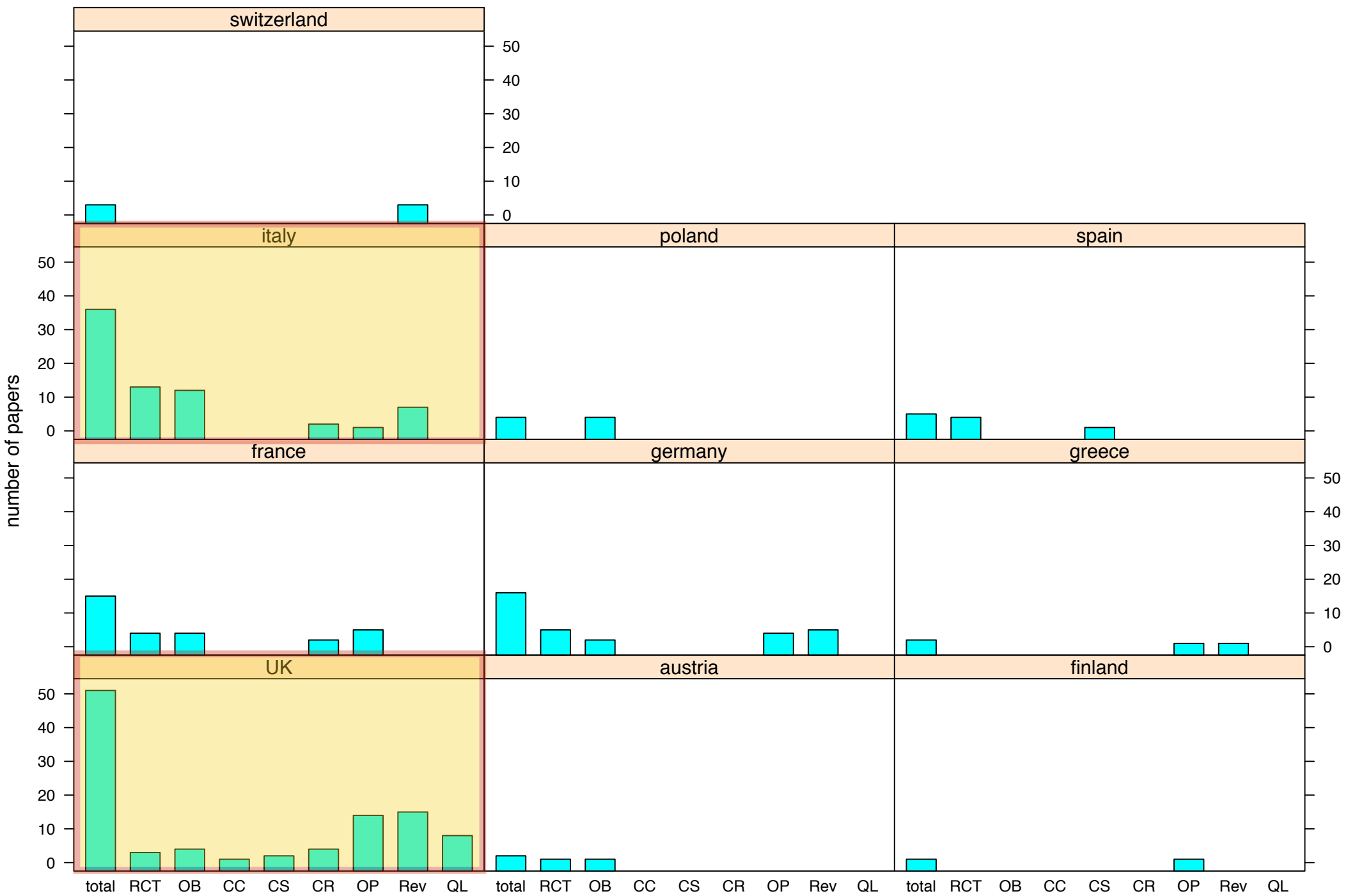
La ricerca osteopatica in Italia: passato, presente e futuro

Francesco Cerritelli

Fondazione C.O.ME. COLLABORATION - Onlus
Dipartimento di Neuroscienze - Università di Chieti-Pescara

fcerritelli@comecollaboration.org
www.comecollaboration.org





Type of research

- 25% RCT
- 75% non-RCT
- based on data, the RR of publishing a non-RCT compared to RCT is 3.0 (95% CI 2.1 - 4.5)

Question to ask before opting for an RCT...

What's your treatment?

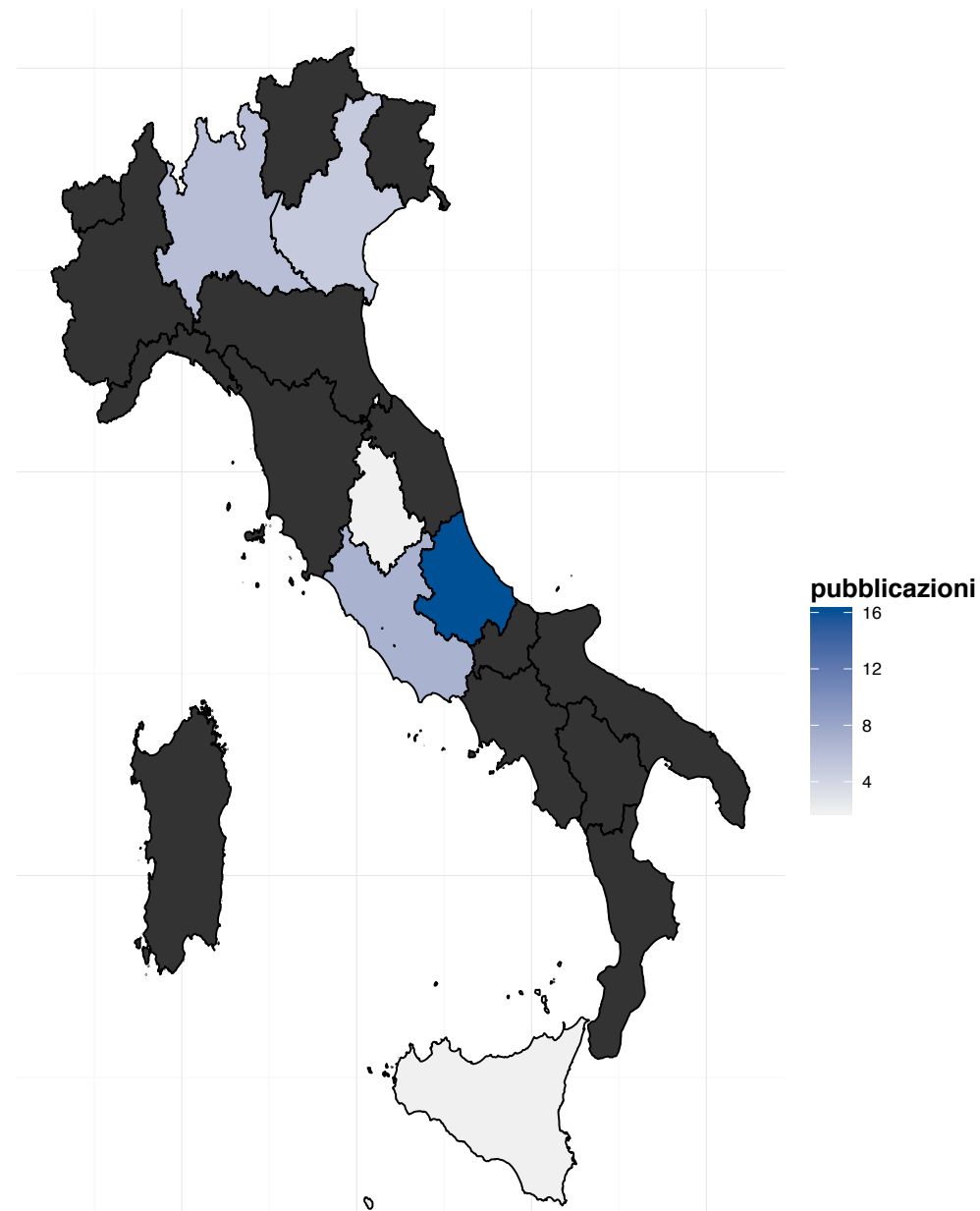


We don't have one, we just heard RCTs were the gold standard.

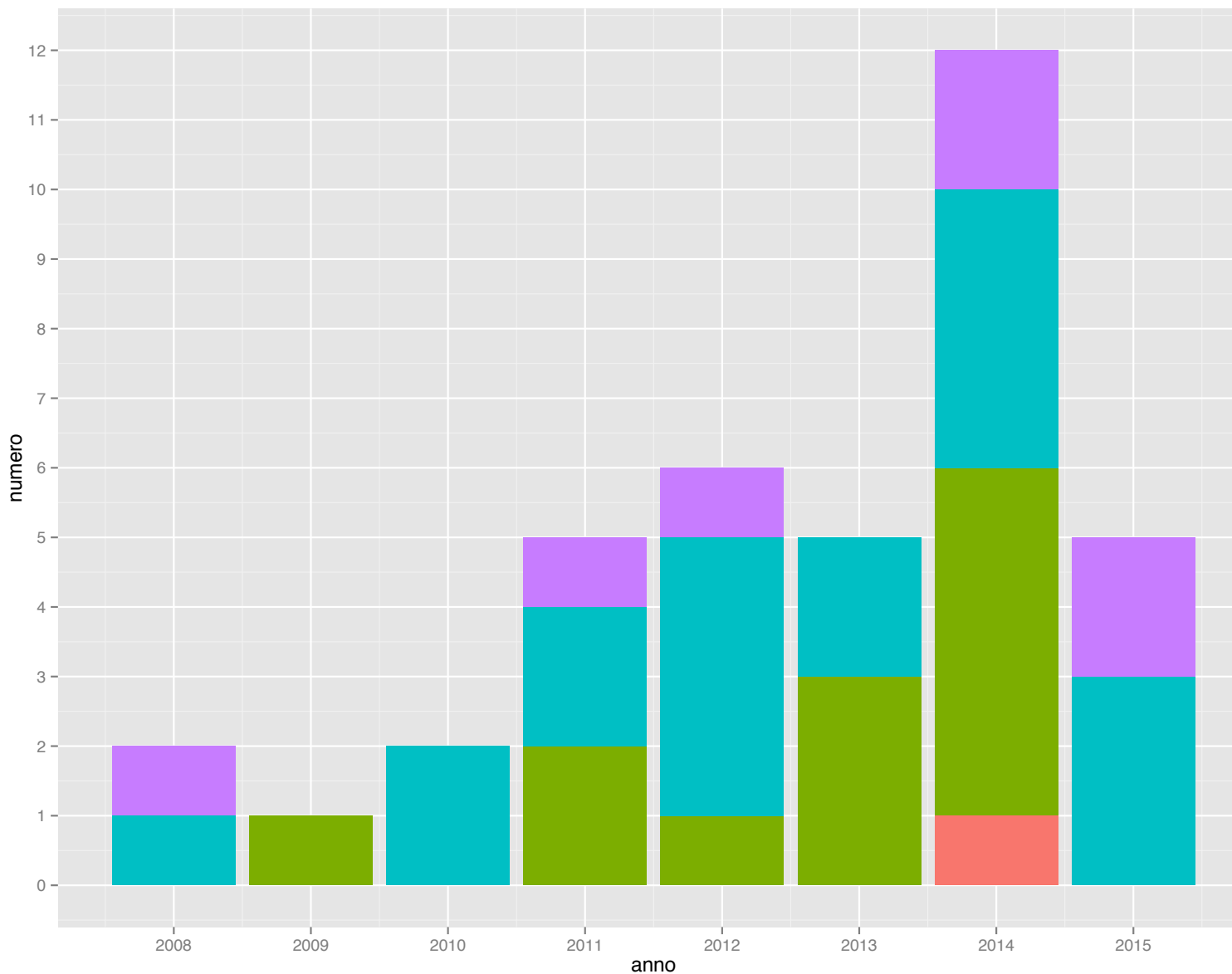


Osteopatia: IT e ricerca

Geo localizzazione



Produttività scientifica



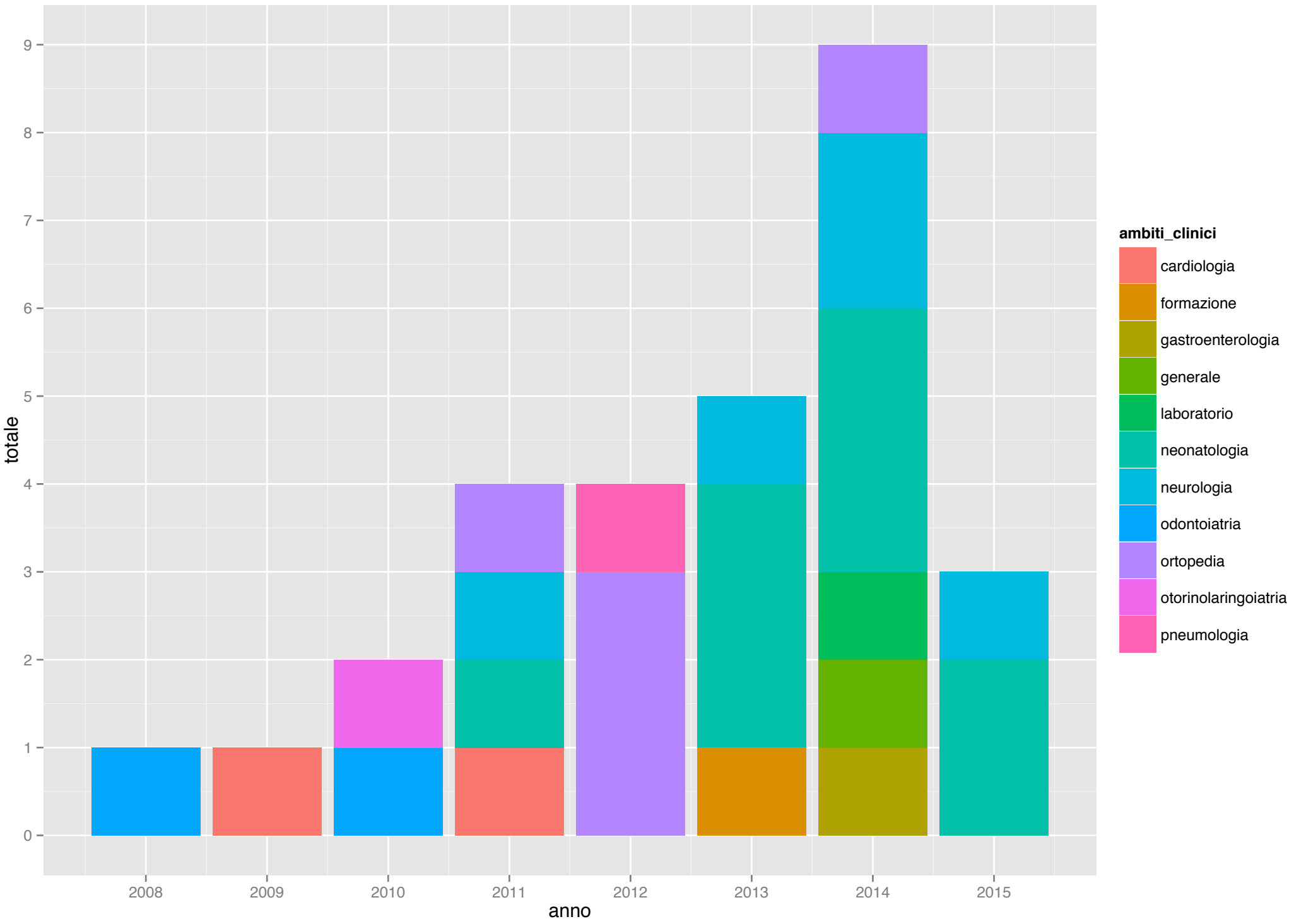
40% RCT (n=15)

60% non-RCT
(n=23)

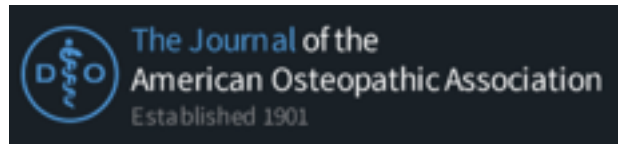
tipologia

- base
- OB
- RCT
- review

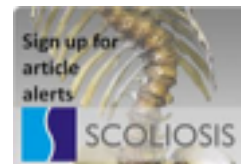
RR (INT vs non-INT) =
0.6 [0.3753 to 0.9871]



“Qualità” scientifica



CHIROPRACTIC & MANUAL THERAPIES

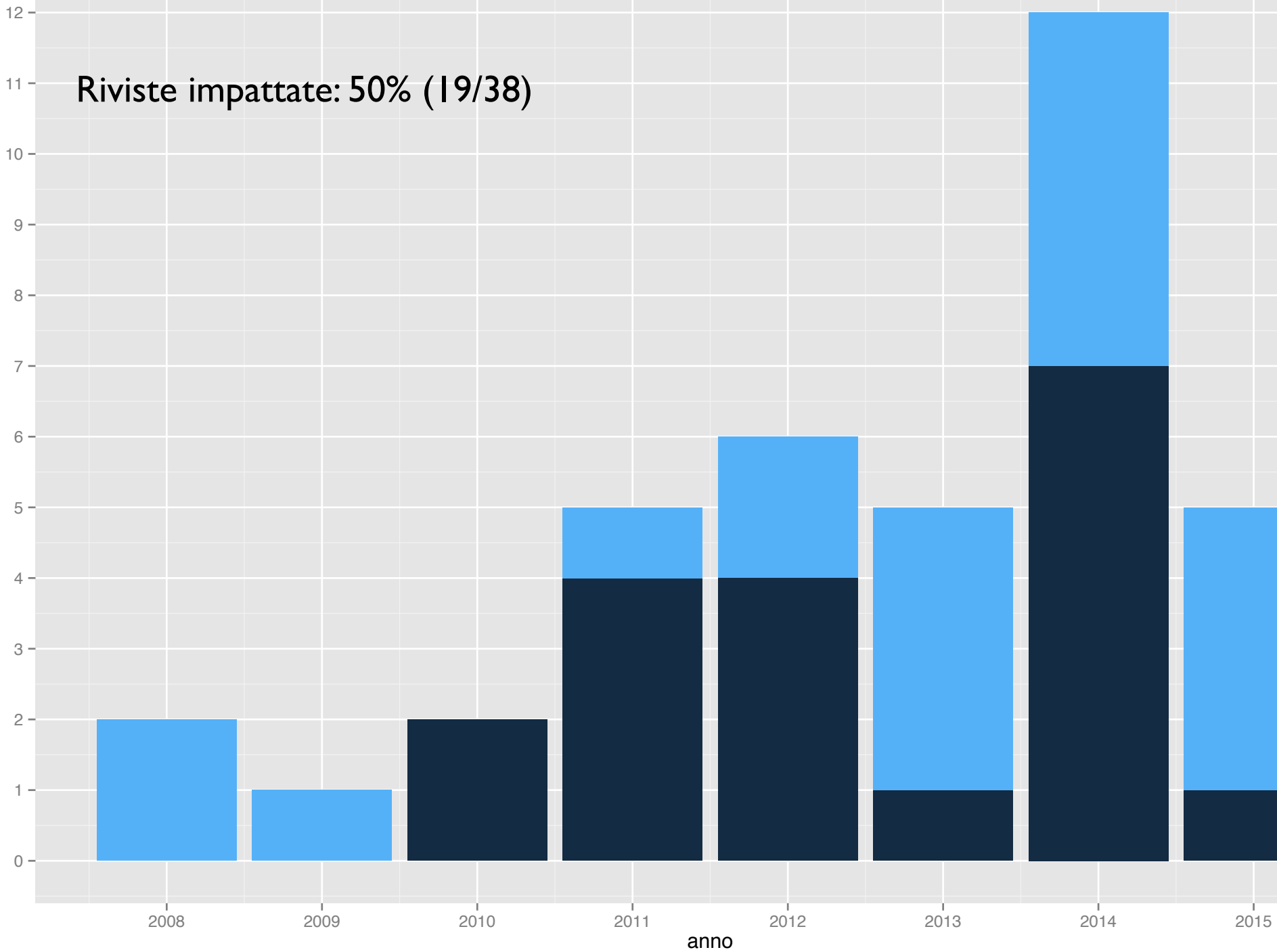


Impact factor medio: ~1



Riviste impattate: 50% (19/38)

totale



- ~20% (7/38) single scuole
 - ~5% (2/38) tra scuole di osteopatia
 - ~50% (20/38) tra scuola e altro istituto (i.e. università, ospedale)
 - ~25% (9/38) non scuole di osteopatia (università)
-
- ~5% (2/38) multicentrici

Enti (centri) ricerca

- (sotto) commissione ricerca ROI (2008 - 2015)
- dipartimenti di ricerca scuole
- centri esterni
 - EBOM (2008 - 2014)
 - ERCOM (2010 - oggi)
 - COME (2014 - oggi)



COME

CENTRE FOR OSTEOPATHIC MEDICINE COLLABORATION

The Centre for Osteopathic MEdicine (COME) Collaboration is a **non-profit foundation** looking to establish **international multidisciplinary partnerships** to pursue grant funding and outsourcing support in research, clinical practice and health care system.

support members and colleagues to be bold and achieve outcomes throughout a high-quality project-based approach.

Independent



Be diverse, be smart, be together to achieve the next step in osteopathic health care and research.



The mission of COME is to play a key role in international osteopathic research and health care practice.



independent

multidisciplinary
equal partnerships

integrative collaboration

Goals

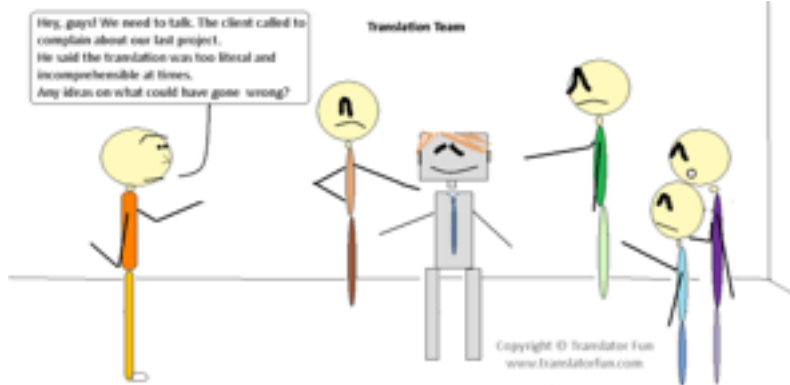


- ESTABLISH international-based, multi-disciplinary and multi-center osteopathic research
- INNOVATE/ADVANCE the scientific and technological underpinnings of the osteopathic health care practice
- DEVELOP/ELABORATE national and international multi-center scientific projects, leading to publications
- RAISE awareness in the public and osteopathic community about the scientific objectives of the profession by organizing postgraduate training courses, conferences and events
- PROMOTE the osteopathic profession and the benefit of integrating osteopathy within National Health Services
- ENCOURAGE the professional field to generate new ideas for establishing new research projects
- EMBRACE partners in the process of research and innovation

Struttura



Collaborazioni inter-disciplinari

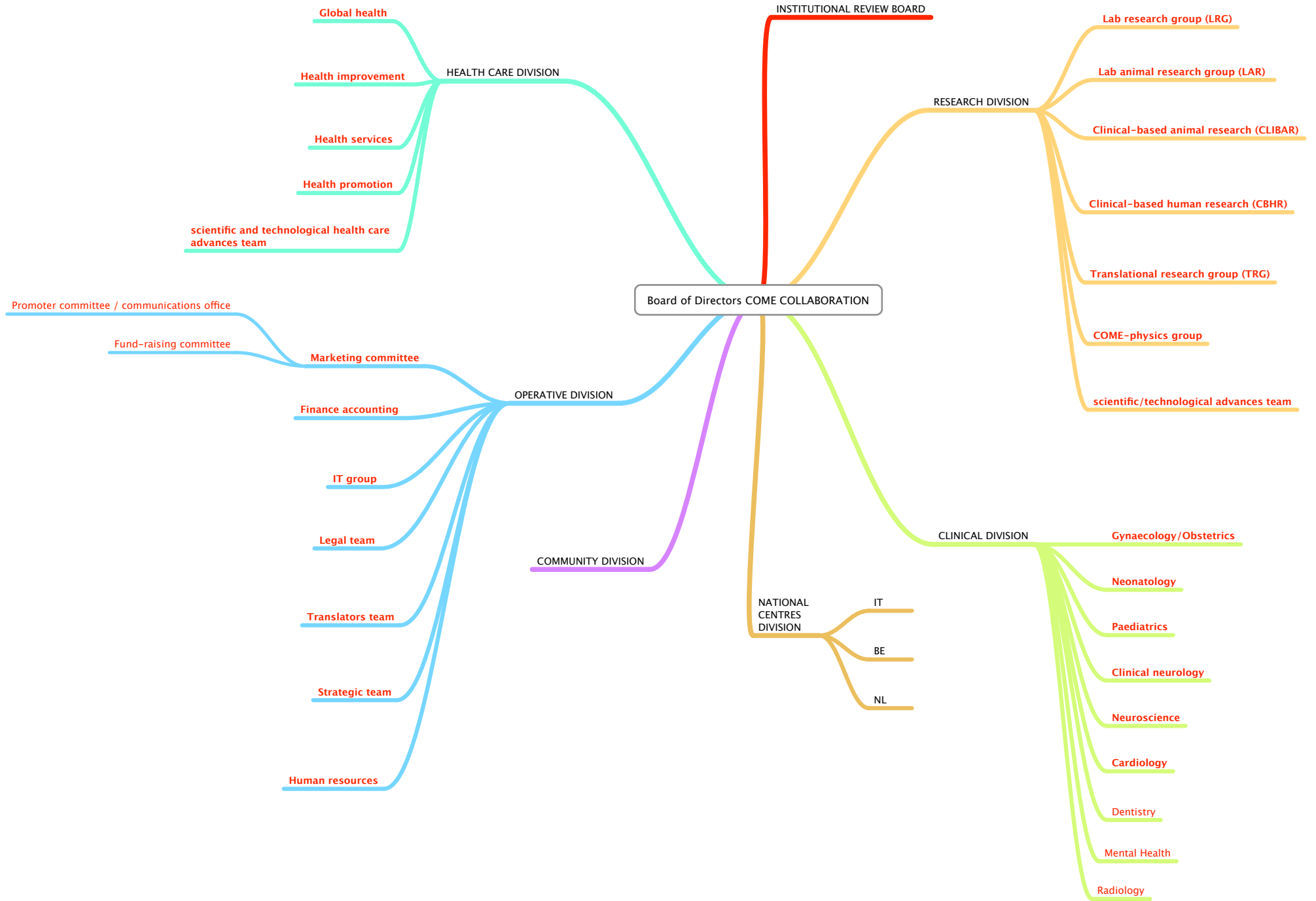


"Your x-ray showed a broken rib, but we fixed it with Photoshop."



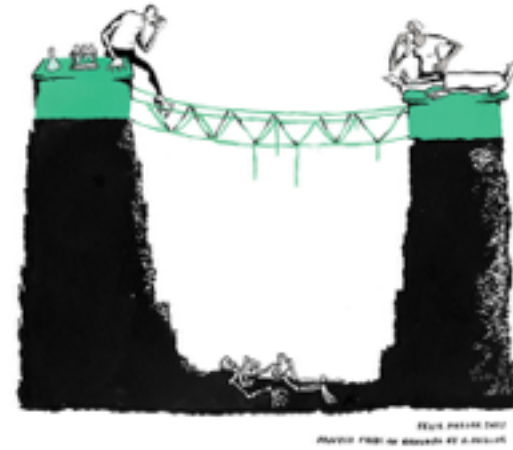
"YOU'RE GOING TO HAVE TO GIVE UP PAINTING CEILINGS, MICHELANGELO!"





What (we have to do)

Decrease the **gap** between 'patients, researchers, health-care practitioners, stakeholders, policymakers' and osteopathic culture

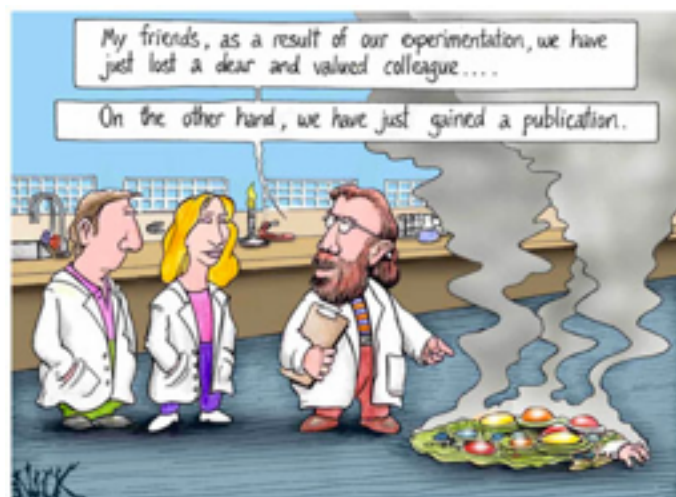


Collaborate and **share**

Create appropriate and ambitious **research** project

Publish large research **trial** (N > 500 subjects)

[overall: <10 trials published]





Prospettive



- bisogno di condurre più ricerche basate su un rigore scientifico alto e che verifichino l'efficacia clinica del OMT negli ambiti di interesse pubblico
- ampliare gli ambiti di ricerca del OMT (skewed data)
- stabilire collaborazioni interdisciplinari e multicentriche durature

INNOVATION

**attraverso una collaborazione professionale,
fattiva ed integrata**

Grazie!



**“The important thing is not to stop questioning.
Curiosity has its own reason for existing.”
Albert Einstein**

Francesco Cerritelli

Fondazione C.O.M.E. COLLABORATION - Onlus
Dipartimento di Neuroscienze - Università di Chieti-Pescara

fcerritelli@comecollaboration.org
www.comecollaboration.org



Roma, 22-23 Maggio 2015

